

SERVING THE POOR & VULNERABLE

“When we meet a person truly in need, do we see the face of God?” —Pope Francis

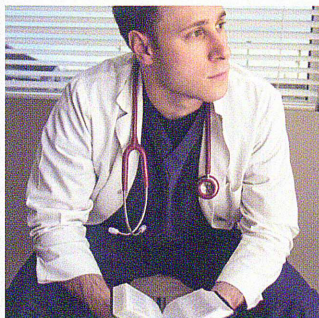
- Does the candidate display a priority for keeping the poor and vulnerable in mind?
- Does the candidate support policies to reduce poverty and dependency?
- Does the candidate support expanding access to affordable housing?
- Does the candidate’s policy stances indicate that he or she considers affordable and accessible healthcare a fundamental human right?
- Does the candidate support working for comprehensive immigration reform that offers a path to citizenship, treats immigrant workers fairly, prevents the separation of families, maintains the integrity of our borders, respects the rule of law, and addresses the factors that compel people to leave their own countries?



RELIGIOUS LIBERTY

“In all contexts, its basic contours are the same: it is the ‘immun[ity] from coercion on the part of individuals or of social groups and of any human power, in such ways that no one is to be forced to act in a manner contrary to his own beliefs, whether privately or publicly, whether alone or in association with others, within due limits.’”¹²

- Does the candidate oppose efforts to force people working for religious institutions to violate their consciences?
- Does the candidate support religious institutions’ right to serve according to their sincerely held beliefs?
- Does the candidate oppose efforts to require religious institutions to compromise their moral or religious convictions to participate in government programs?



EDUCATION

“Parents—the first and most important educators—have a fundamental right to choose the education best suited to the needs of their children.”¹³

- Does the candidate support policies allowing parents to choose education for their children, including policies that encourage and support a variety of education options?

CRIMINAL JUSTICE

“An ethic of responsibility, rehabilitation, and restoration should be a foundation for the reform of our broken criminal justice system.”¹⁴

- Does the candidate support policies aimed at justly reducing the prison population, helping people leaving prison to reintegrate into their communities, combating recidivism, promoting just sentencing reform, and strengthening relationships between the police and the communities they serve?

CARE FOR CREATION

“Living our vocation to be protectors of God’s handiwork is essential to a life of virtue; it is not an optional or a secondary aspect of our Christian experience.”¹⁵

- Does the candidate recognize protecting the land, water, and air we share as a duty of stewardship?
- Does the candidate support policies to protect Michigan’s natural resources?



The information in this guide relies primarily on *Forming Consciences for Faithful Citizenship*, a document produced and occasionally updated by the U.S. Conference of Catholic Bishops (USCCB). The full document can be found at the USCCB website at cchl.cc/fcfc. ■

